

Gælder for følgende modeller:  
Applies to the following models:  
Gelten für die folgenden Modelle:

### Tarpaulin EMG tool bags



### *Brugsanvisning*

Instruktioner for patch repair kit

N/A



### *User instructions*

Instructions for patch repair kit

pages 2-4



### *Gebrauchsanleitung*

Richtlinien für die Patch Repair Kit

N/A

**User Instructions for:** Patch Repair Kit for tarpaulin EMG lifting bags**List of parts:**

Description	QTY	Picture
Pencil case	1	
SABA sabacontact 70 T - 250 ml	1	
Tailor chalk	5	
0.75 mm tarpaulin - Orange - Ø10 cm	10	
0.75 mm tarpaulin - Orange - Ø15 cm	10	
0.75 mm tarpaulin - Orange - 10x18 cm	5	
0.75 mm tarpaulin - Black - Ø10 cm	5	
0.75 mm tarpaulin - Black - Ø15 cm	5	
0.50 mm tarpaulin - Yellow - Ø10 cm	5	
0.50 mm tarpaulin - Yellow - Ø15 cm	5	

**General notes:**

- Do not use the tool bag if there is any doubt of the integrity of the bag. If ever in doubt, do not risk deeming the bag usable. Safety first.
- Only patch holes and small cuts.
- These patches only work on tarpaulin bags.
- The usual precautionary measures are to be adhered to when handling chemicals.
- Use proper safety equipment equipped.



1



- » Before performing a repair, make sure you have the proper safety equipment equipped.
- » The usual precautionary measures are to be adhered to when handling chemicals.
- » Avoid contact with eyes and skin.
- » Remove any clothing soiled by the product.
- » Wear safety gloves. The glove material must be impermeable and resistant to the glue.
- » Wear safety glasses.

2



- » The glue is very strong so make sure to use a suitable respiratory protective device in case of insufficient ventilation.
- » Recommended filter: Filter AX

3



- » Review the bag and identify the hole/cut which needs to be patched.
- » Evaluate the patch size needed.
- » Pretreat PVC material with cleaner.
- » Surfaces must be dry and free for dust.

4



- » The patch must cover the entire hole/cut.
- » The patch must have at least 1 cm free space from the hole to the outer edge.

5



- » Place the bag on the ground, a table or another flat surface.
- » This will make it easier to apply pressure and straighten out the fabric.



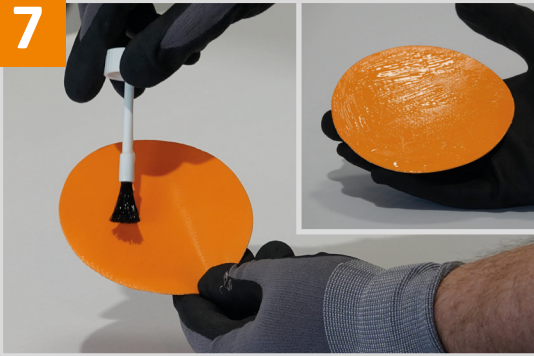


6



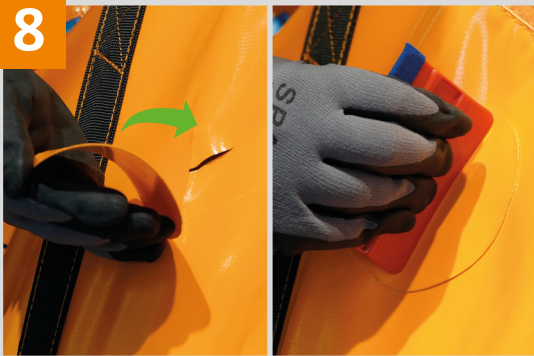
- » Place the patch on the bag and draw around with a grease pen or chalk to highlight the area.
- » This will give you an easy reference point when applying the glue

7



- » Apply glue to the entirety of the marked area on the bag.
- » Apply glue to the entire area of the patch. One side only.

8



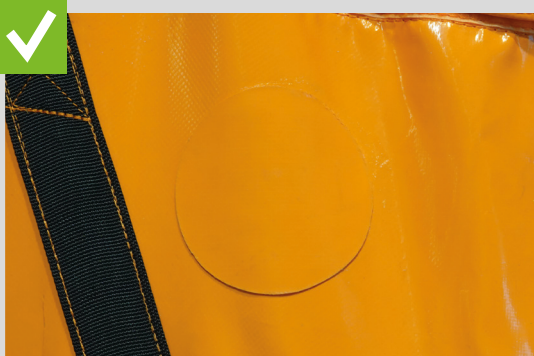
- » Attach the patch on the bag.
- » Apply a lot of pressure.
- » The patch must be fully attached all the way around.

9

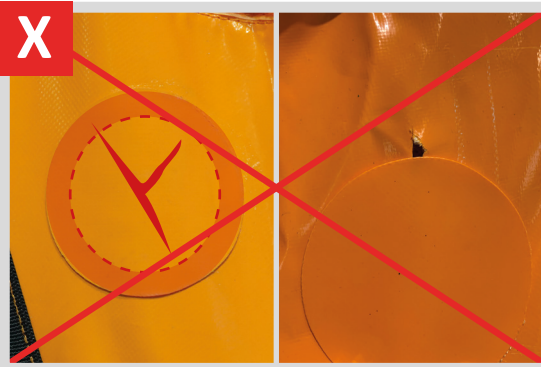


- » When the patch is attached, a drying time of at least 15 minutes is required.
- » Do NOT use the bag during this time.
- » It may be an idea to put pressure on the patch during this time, by placing something heavy on top.

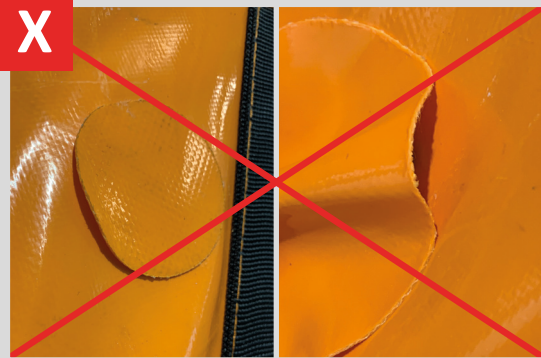
✓



- » Test the strenght of the patch and fabric.
- » Make sure the patch is still fully attached all the way around.
- » The bag is now usable again.



- » The hole must not be within 1 cm of the edge of the patch.
- » The hole must not be partially covered.



- » The patch must be completely attached all the way around the edges.
- » The patch must not be gaping.



- » The patch must NOT be used on polyester bags.
- » The patch will only attach correctly on tarpaulin bags.